

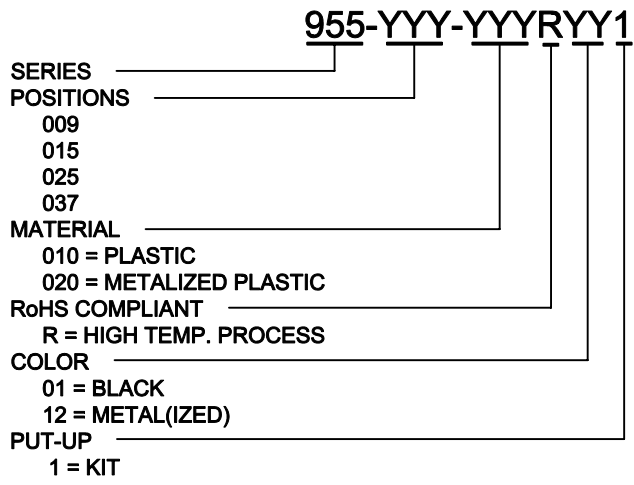
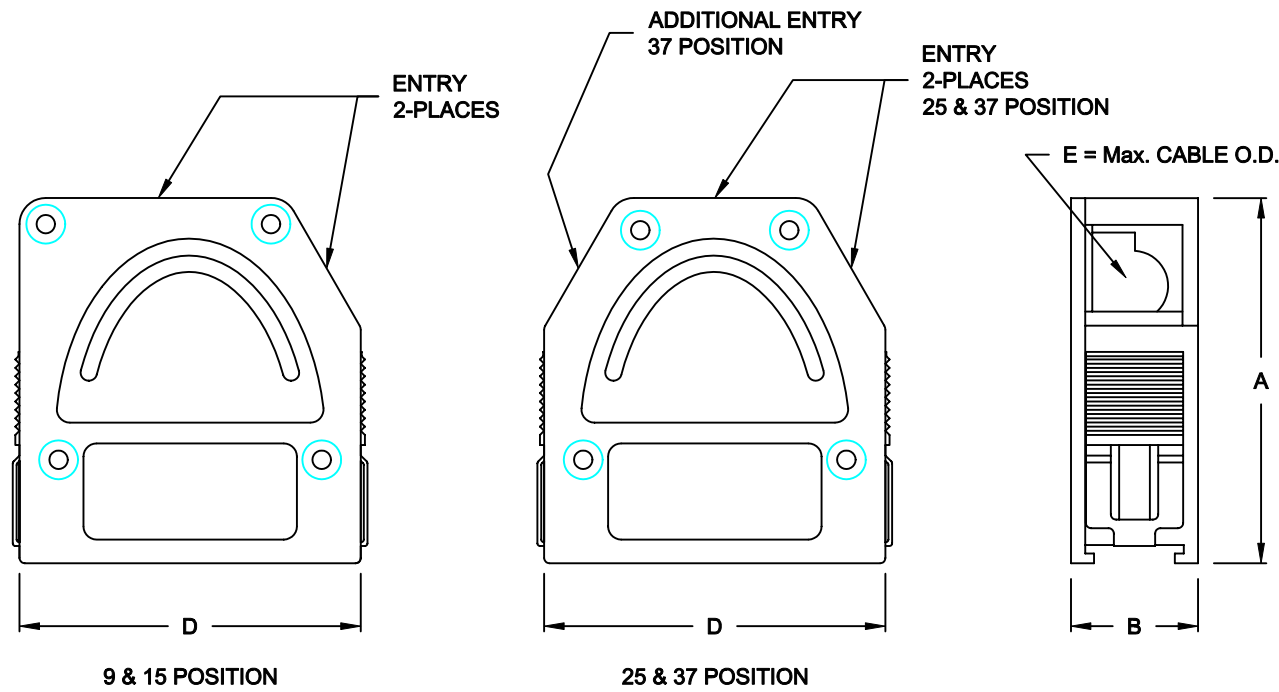
DESCRIPTION: QUICK RELEASE - BLACK & METALIZED PLASTIC

SPECIFICATION:

MATERIAL
 BLACK PLASTIC: ABS PLASTIC, SICOFLEX, UL 94 V-0
 METALIZED PLASTIC: NICKEL OVER COPPER PLATING
 TEMP RATING: -55°C to +125°C

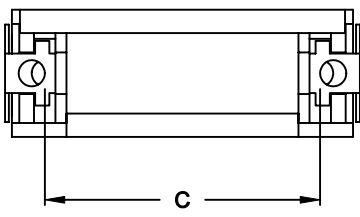
BACKSHELL KIT INCLUDES:

- (2) BACKSHELL HALVES
- (4) MOUNTING SCREWS
- (1) STRAIN RELIEF CLAMP
- (2) STRAIN RELIEF SCREWS



DIMENSIONS (IN.)

No. OF PINS	A	B	C	D	E
09	1.740	0.606	0.984	1.299	0.354
15	1.740	0.606	1.312	1.626	0.394
25	1.740	0.606	1.852	2.165	0.433
37	1.740	0.606	2.500	2.815	0.433

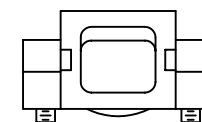
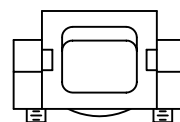
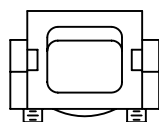
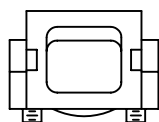
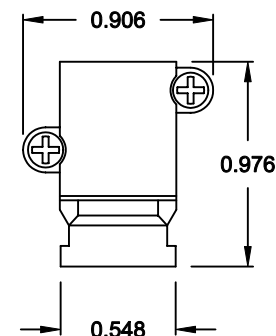
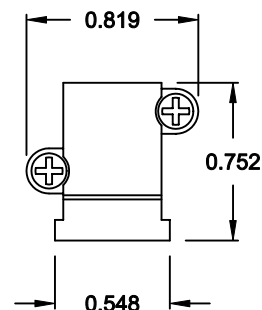
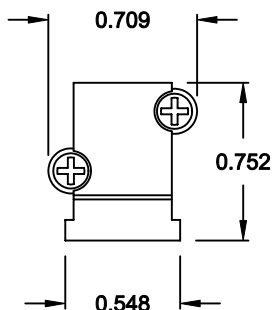
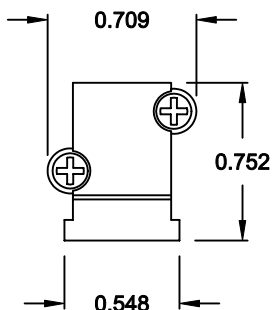
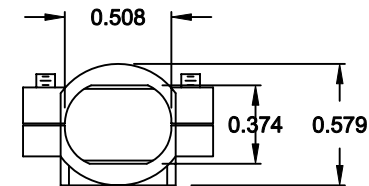
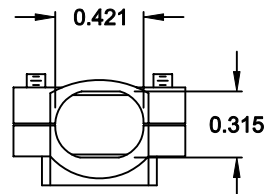
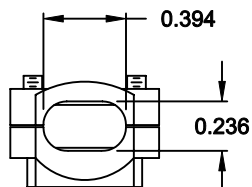
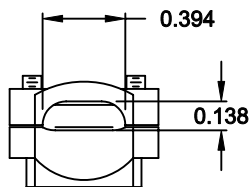


DO NOT SCALE FROM DRAWING

	THESE DRAWINGS AND SPECIFICATIONS ARE THE PROPERTY OF NorComp AND SHALL NOT BE REPRODUCED, COPIED OR USED AS THE BASIS FOR THE MANUFACTURE OF SALE OF APPARATUS WITHOUT WRITTEN PERMISSION.		DRAWN: C. SMITH	DATE: 04-10-07
			CHECKED:	DATE:
NorComp	SCALE: 1 : 1	SHEET 1 OF 2	REV 1	
	DWG NO. 955-YYY-YYYRYY1			

RoHS COMPLIANT

CABLE CLAMPS ORDERED SEPARATELY



P/N 955-09-SR-4-7
CABLE RANGE = 0.157 - 0.276

P/N 955-15-SR-7-10
CABLE RANGE = 0.276 - 0.394

P/N 955-25-SR-9-12
CABLE RANGE = 0.354 - 0.472

P/N 955-37-SR-11-14
CABLE RANGE = 0.433 - 0.551

DO NOT SCALE FROM DRAWING



THESE DRAWINGS AND SPECIFICATIONS ARE THE PROPERTY OF NorComp AND SHALL NOT BE REPRODUCED, COPIED OR USED AS THE BASIS FOR THE MANUFACTURE OF SALE OF APPARATUS WITHOUT WRITTEN PERMISSION.

DRAWN:
C. SMITH

DATE:
04-10-07

CHECKED:

DATE:

NorComp

SCALE: 1 : 1 SHEET 2 OF 2 REV 1

DWG NO. 955-YYY-YYYRYY1

RoHS COMPLIANT